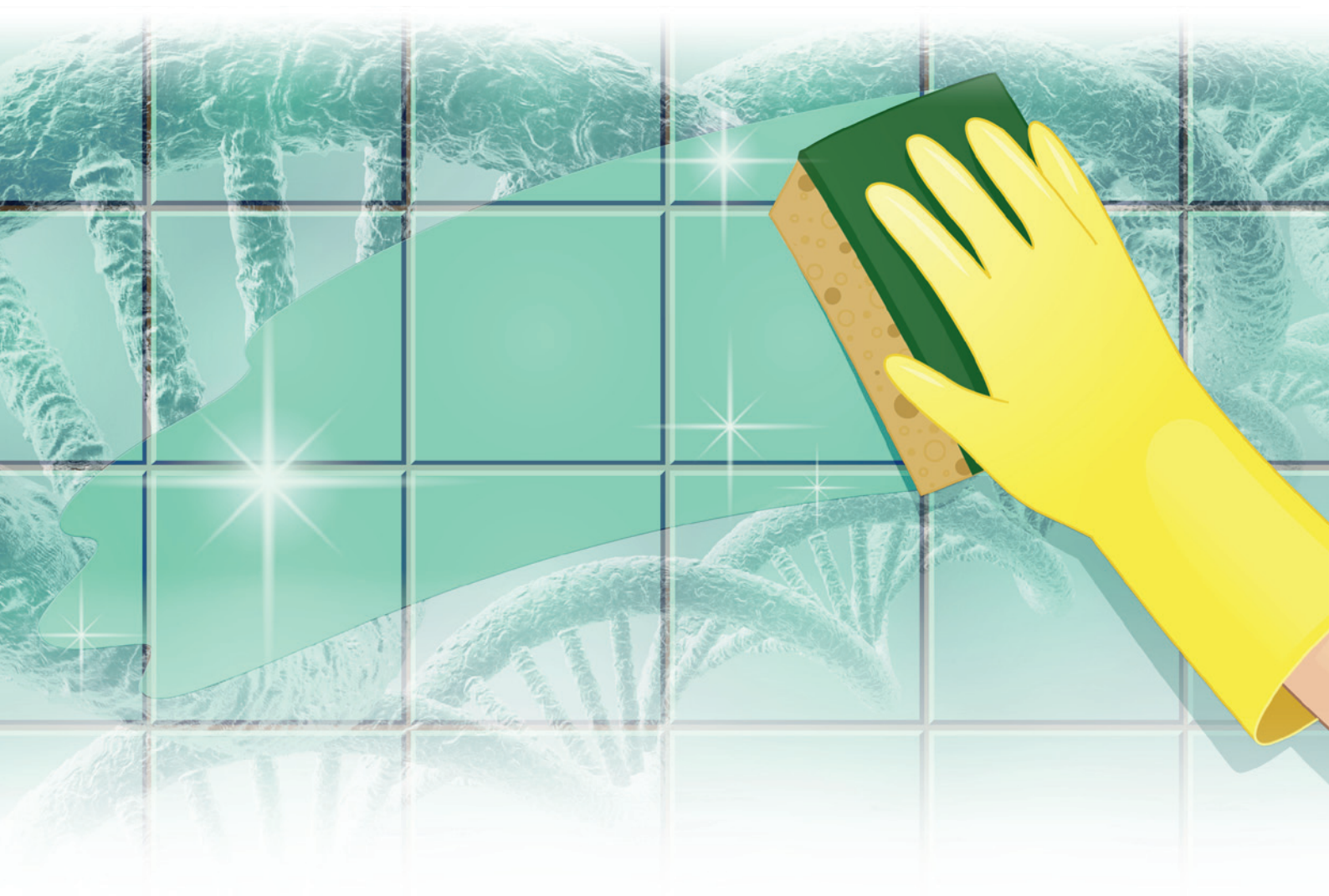


LabClean™



- For removal of DNA and RNA contaminants during lab cleaning (floors, tiles etc.).
- Applicable for routine cleaning as well as spill clean-up.
- Convenient and effective within seconds after use.
- Stable for a long time.

Background

Contaminant DNA, RNA, DNases, and RNases represent a major issue in molecular biology, especially for highly sensitive techniques like PCR. They can be very resistant to treatment, making their removal problematic. Originating from aerosols, contaminant DNA and RNA can lead to sample cross-contaminations. The amplification process can detect down to a single DNA or RNA molecule, impairing the testing procedure and causing misinterpretation of results, inaccurate data, false positives, or artifacts. Such contaminations can occur from time to time, even in experienced labs. Unfortunately, contamination sources like leaks, PCR tubes, pipette tips and pipettes, other lab equipment and surfaces will not be noticed unless inaccurate PCR results demonstrate it. Including LabClean™ into your cleaning routine or spill clean-up for floors or generally large surfaces prevents you from spreading DNA/RNA contaminants to other lab areas, reduces the risk of DNA contamination of lab equipment and helps getting reliable results.

Features

LabClean™ is a DNA decontamination solution available as a 200 x concentrate for routine laboratory cleaning of large areas like floors (mopping). The product is based on a non-carcinogenic DNA destroying chemistry. The solution contains a surfactant and a DNA/RNA-destroying, non-alkaline and noncarcinogenic agent. DNA and RNA are completely removed within seconds after use.

LabClean™ is intended for use on relatively large surfaces like walls (tiles, panels), door knobs, floors, etc. to effectively remove amplicon, plasmid, genomic DNA and RNA. Its application is fast, easy and ideal to maintain a clean work area, thereby saving time and expenses.

For preventing cross-contaminations between distinct PCR setups by specific decontamination of lab devices (e.g. centrifuges, pipettes, etc), smaller work areas and benches, etc. we recommend PCR Clean™ Spray or PCR Clean™ Wipes.

Recommended Use

LabClean™ is particularly suitable for cleaning large laboratory surfaces (e.g. for mopping floors). We recommend the use of LabClean™ once a week. The cleaning solution is highly concentrated and must be diluted as follows: add 50 ml of LabClean™ to 10 liters of water. Wipe smooth, non-porous surfaces with the diluted cleaning solution using a cleaning cloth. We recommend to wipe once more with water. For coated or sensitive surfaces, like light or non ferrous metals, we recommend to spot test prior to use to avoid damage or discoloration.

Content

1 liter bottle, highly concentrated, to be diluted 200 x prior to use.
Composition
< 60 % phosphoric acid, < 10 % ethoxylated alcohols, purified water

Storage and Shelf Life

Stable at room temperature for at least 12 months.

Ordering Information

15-4100 (200 x concentrate, 1 liter bottle)

How to order

Tel.: +49-30-2000437-0
E-mail: order@minerva-biolabs.com
Internet: www.minerva-biolabs.com

